

Marriages in Neuenburg, Kr. Schwetz, Westpreußen

The following names were extracted by John Bentz from FHL film #715,124, "Kirchenbuchduplikat, 1823–1871, Evangelische Kirche Neuenburg (Kr. Schwetz)," specifically "Heiraten [marriages] 1823–1865." This parish was in West Prussia, and is currently known as Nowe (Świecie), Bydgoszcz, in Poland. Further films for this parish are available through the FHL for births and deaths, on films 715,122–123, 1417588 Item 2 and 1417589 Item 1. The list will be continued (and finished) in the next issue of *The German Connection*. If you need to know the original order of names (on the actual film), you can request a spreadsheet file of the whole extraction from the *Connection* Editor. The two columns are surname and date (some have Kirchenbuch page numbers as well). Thanks also to Nancy Simonson for typing up the handwritten extraction list into a spreadsheet.

Name	Date	Name	Date	Name	Date	Name	Date
Abraham	p 202, 1843?	Baumgart	1823–58	Bindriem	1823–58	Bohse	p 326, 1855
Adam	1835	Baumgart	1833	Bindrien	1832	Boldt	p 326, 1855
Ahrend	p 202, 1843?	Baumgart	1835	Binner	1823–58	Bolschan	p 258, 1849
Albert	1835	Baumgarth	1823–58	Birkenhagen	1823–58	Bommert	1823–58
Albrecht	1823–58	Baumgarth	p 326, 1855	Birkenhagen	1833	Bonnarls	1823–58
Alexander	1823–58	Baumgarth	p 326, 1855	Birkenhagen	p 326, 1855	Bootzke	1835
Alta	p 258, 1849	Becker	1835	Birkenhogen	1823–58	Borchardt	1823–58
Altenhof	p 258, 1849	Behlke	p 326, 1855	Bischoff	1823–58	Borck	1823–58
Altrode	1834	Behrend	p 326, 1855	Bitter	1823–58	Borck	1832
Altrode	p 326, 1855	Behrendt	1823–58	Bitter	1835	Borck	1834
Amsel	1835	Behrendt	1832	Bitter	p 202, 1843?	Bork	1835
Anister	1833	Beierling	p 258, 1849	Black	p 326, 1855	Bork	p 326, 1855
Arendt	1832	Beijan	p 258, 1849	Bleiweiss	p 258, 1849	Borkenhagen	1823–58
Arendt	p 326, 1855	Beismann	1832	Blendowski	p 258, 1849	Borkenhagen	1823–58
Aries	p 202, 1843?	Bellair	1823–58	Bleyweise	1823–58	Bormann	Pg. 35–1843
August	1823–58	Bellinger	1835	Bleyweiss	1833	Bostig	p 258, 1849
Augustin,	1835	Belz	p 202, 1843?	Block	1823–58	Botcher	1833
Aulitt	p 326, 1855	Bendig	1823–58	Block	1835	Boye	p 258, 1849
Baar	1823–58	Bendik	1823–58	Block	p 258, 1849	Bradtke	1823–58
Baarts	p 258, 1849	Bendik	1823–58	Block	p 326, 1855	Brakapp	1832
Badderpedt	p 258, 1849	Bendik	Pg. 35–1843	Blocksdorf	1832	Braker	p 258, 1849
Baecker	1823–58	Bendix	1835	Blum	1823–58	Brakopp	p 326, 1855
Baehr	1835	Bendix	p 202, 1843?	Blum	1833	Brand	p 326, 1855
Baerwald	1823–58	Beng	p 326, 1855	Blum	p 202, 1843?	Brandenburger	1835
Baerwald	1835	Benz	1835	Blumberg	p 258, 1849	Brandenburger	p 202, 1843?
Bahlke	p 258, 1849	Berg	1823–58	Bluthardt	1835	Brandt	1823–58
Bahr	p 326, 1855	Berg	1823–58	Blutka	1823–58	Brandt	1823–58
Baldrau	p 326, 1855	Berg	1833	Boblik	1823–58	Brandt	1833
Balzer	1823–58	Berganski	p 258, 1849	Boblitz	1823–58	Brandt	p 202, 1843?
Balzer	p 202, 1843?	Bergen	1833	Boblitz	1834	Braster	1832
Balzer	p 326, 1855	Berger	1823–58	Boblitz	p 202, 1843?	Bratzke	p 202, 1843?
Balzerowski	1823–58	Berger	p 202, 1843?	Bocke	1823–58	Brauer	p 258, 1849
Balzerowski	1832	Bergholz	1835	Bockmann	p 258, 1849	Braun	1823–58
Barbel	1834	Berliner	p 202, 1843?	Bodka(e)	1823–58	Braun	1832
Barbknecht	1823–58	Bernhardt	1835	Boeck	1834	Braun	p 202, 1843?
Barknecht	1835	Berninisc	p 258, 1849	Boehm	1835	Braun	p 326, 1855
Bart	1835	Beseter	p 258, 1849	Boélan	1823–58	Breda	p 326, 1855
Bartel	p 326, 1855	Bethke	p 326, 1855	Boelke	1823–58	Brischke	p 258, 1849
Barthnecht	p 258, 1849	Betz	p 258, 1849	Boelke	p 202, 1843?	Brischke	p 326, 1855
Barthrecht	p 258, 1849	Beyer	1823–58	Boelke	p 326, 1855	Brix	1823–58
Bartknecht	p 202, 1843?	Beyer	1823–58	Boelteker	p 258, 1849	Brock	1823–58
Bartz	1823–58	Beyer	1835	Boenke	p 202, 1843?	Brock	1835
Barz	p 202, 1843?	Beyer	p 326, 1855	Boettcher	1823–58	Brode	p 258, 1849
Barz	p 326, 1855	Beyerling	p 326, 1855	Boettcher	p 202, 1843?	Brodner	p 326, 1855
Bathmann	1834	Bibrucher	p 326, 1855	Bogen	1832	Brokaw	p 202, 1843?
Batschkowski	1833	Bielan	p 326, 1855	Bohde	Pg. 35–1840	Brosinsky	1832
Bauer	1823–58	Bierwolf	p 326, 1855	Bohlau	p 258, 1849	Brosowska	1823–58
Baumann	1835	Bieszk	1833	Bohm	p 202, 1843?	Brosowski	1823–58
Baumann	p 202, 1843?	Bigall	p 202, 1843?	Bohmfeldt	p 326, 1855	Brosowsky	Pg. 35–1833
		Bindreimer	p 326, 1855	Bohrsch	p 258, 1849	Brosowski	p 326, 1855

Now I knew where to look for Anna, but I had not yet found any European church records for any part of my family. I had wasted a lot of time looking for a village named 'Best-Breuke', which turned out to be a corruption of West Prussia. When I checked the FHLC and *Meyers Orts*, it seemed that likely-looking villages in Kreis Flatow did not have parish churches, and towns that did have a church had not been filmed.

I finally found a film for one parish in the Kreis, even though it was not for a village that I wanted. Being mathematically inclined, I checked out the listings in the FHLC for other films with film numbers just above or below this one. (*Be creative.*) Since then I have discovered the website at <www.westpreussen.de> which lists existing church and civil records for this area, along with their location or film number. (*Look for websites and mailing lists about your area.*)

I started going through the records in the sequence one film at a time, and over time I found ancestors Mathias **Korkowski**, Eva **Pischke**, Peter **Otto**, Paulina **Schuette**, Rosalia **Hagedorn**, and Albert **Mielke** in Lanken, Radawitz, and Karlsdorf in Kreis Flatow.

Meanwhile I had learned that Franz Revering and Anna Jarka had moved from Minnesota to the Humboldt, Saskatchewan, area about 1903. We were able to travel to Canada one summer and meet with relatives. I copied photos and went through the genealogy records at the local library. My husband also pushed me to order Anna's provincial death certificate, which I was ready to ignore in my quest to find her birthplace. When it came in the mail, it contained her mother's maiden name (**Suchy.**) (*Don't dismiss any source.*)

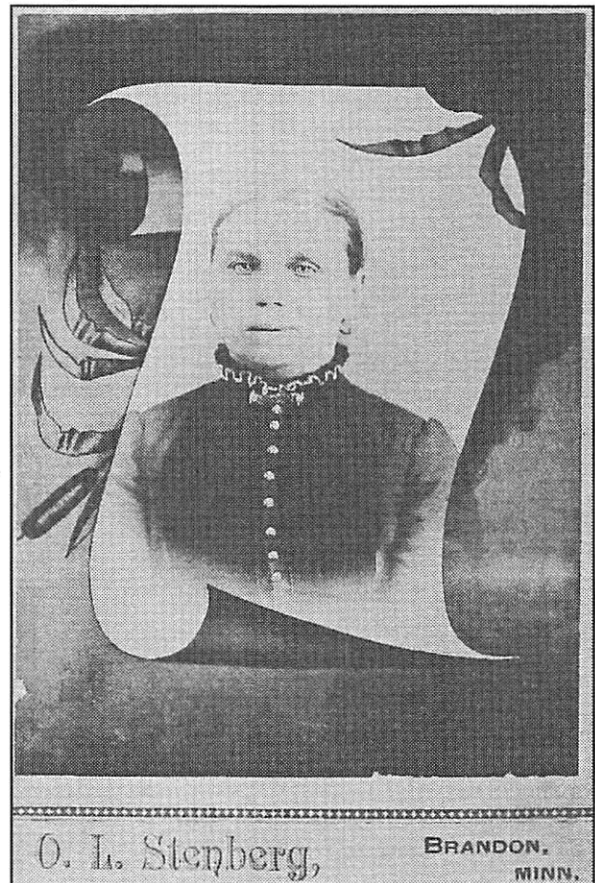
Back home, I continued to work my way through that numerical sequence of films. One day I thought that I had finished a film, so I put it back in its box and re-filed it in the cabinet. Then I checked my list of film notes and found that I had missed the last item, so I went back and scrolled through to the end. (*Look again.*) There were dozens of Jarkas, beginning on the first page of the item. The parish was Slawianowo (Steinmark in German). This town was *ethnically Polish*, but on the southern border of the same Kreis that was the home of my German speaking ancestors.

So there was Anna, along with her sisters Eva, Magdalena, Marianna, and Praxida, as well as brother Johann. Johann married and stayed in Europe. Their father, Paul Jarka, (Powell as pronounced in German) had died in an epidemic. Anna's mother, Francesca Suchy, had re-

married Johann **Klimek** and indeed come to Minnesota with him and her daughters. The historical society had helped me find Eva, Magdalena, Marianna, and Anna, and I was now able to find Francesca's grave, but what had become of Praxida?

A year or two later I had a chance to visit with one of my father's sisters, my 93-year-old Aunt Marie. Her health was satisfactory, but her hearing had deteriorated to the point where it was difficult for her to follow a conversation and she resorted to making random comments about the weather, the flowers, etc. I wanted to share my discoveries with her, but my mother and my cousin were convinced that it was hopeless. Determined to make it work, I sat directly in front of Marie, wrote things out, sketched a family tree on a napkin, and showed her a couple of the documents that I had found. When I mentioned the Kapphahns, Boesens, and other families, she suddenly added "and Wilms." (*Ask again. Don't give up.*)

Sure enough, when I looked for her in the 1880 census, Praxida (although listed as Brigitta) had come to Minnesota and married August **Wilm**. She is also listed as Praxida Wilm as a witness to the Kapphahn marriage. (*Look again.*) ❧



Anna Yarka as a young woman

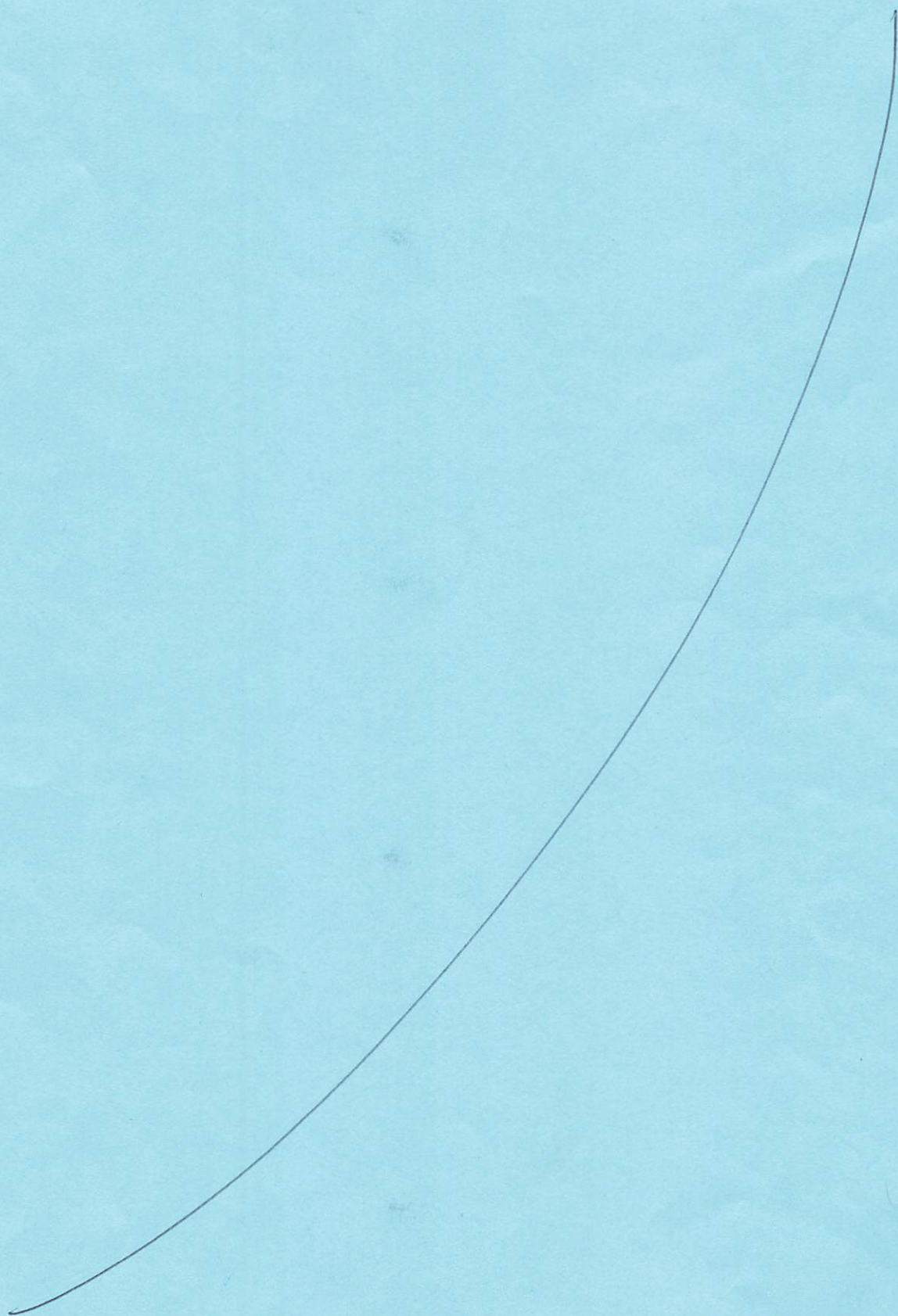
Brotrke	p 326, 1855	Decker	p 202, 1843?	Eck	p 258, 1849	Fick	1823-58
Brotzke	1835	Deffke	1835	Eck	p 326, 1855	Fick	1835
Brotzki	1823-58	Degenhardt	p 202, 1843?	Eckert	1835	Fick	p 202, 1843?
Bruck	p 326, 1855	Dembricki	1823-58	Edam	1835	Fick	p 326, 1855
Bucholz	1823-58	Dembriki	1823-58	Edeling	1832	Fiebiger	1823-58
Bucholz	1823-58	Demmler	1823-58	Edom	1823-58	Fiedler	p 258, 1849
Bucholz	p 326, 1855	Denss	p 258, 1849	Eggert	p 258, 1849	Fillner	1835
Budanowiz	p 326, 1855	Denz	1835	Ehlert	1823-58	Filsner	1835
Bugdeinewski	p 258, 1849	Denz	p 258, 1849	Ehlert	p 202, 1843?	Fink	p 202, 1843?
Bunehardt	1835	Deppke	1823-58	Ehling	p 202, 1843?	Fisch	1835
Bunk	p 202, 1843?	Deptalski	p 326, 1855	Ehmer	p 202, 1843?	Fischer	1823-58
Burant	1823-58	Deskowski	1823-58	Ehmer	p 326, 1855	Fischer	p 202, 1843?
Burant	1832	Dierkmann	p 326, 1855	Ehzmenn	p 258, 1849	Fischer	p 202, 1843?
Buse	1823-58	Dietrich	1823-58	Eichel	1832	Fischer	p 326, 1855
Buse	1834	Dietrich	1835	Eichel	p 326, 1855	Flachsmeyer	p 326, 1855
Busse	1823-58	Dietrich	p 258, 1849	Eichstadt	p 326, 1855	Flachsmeyer	p 326, 1855
Buth	p 326, 1855	Dill	p 258, 1849	Eichstedt	p 202, 1843?	Flocksmeier	1833
Buttner	1823-58	Dircks	1832	Ekkert	1823-58	Foelski	1835
Butzer	1823-58	Dirks	1823-58	Elemens	p 326, 1855	Foss	1823-58
Carletndersch	p 326, 1855	Dirx	p 326, 1855	Elias	1835	Foss	1823-58
Carns	p 326, 1855	Dirxen	p 258, 1849	Elis	p 326, 1855	Franck	1823-58
Caspari	p 202, 1843?	Dittmann	1834	Eller	1823-58	Franck	Pg, 35-1843
Chemse	1833	Dlugolas	p 326, 1855	Eller	1835	Frank	p 258, 1849
Christke	1833	Dock	p 202, 1843?	Elling	1823-58	Franz	1823-58
Christopolski	1835	Doehn	1832	Elling	p 258, 1849	Franz	p 202, 1843?
Chrzonowski	p 258, 1849	Doethat	p 258, 1849	Elling	p 326, 1855	Frauk	1823-58
Chudopp	1835	Doetlaf	p 258, 1849	Elmlinger	1834	Fregwald	p 326, 1855
Cierske	1823-58	Doettlaffullheim	1823-58	Elze	p 258, 1849	Frei	1835
Cierske	1823-58	Doettlaffullheim	1834	Emp	1835	Freiper	p 258, 1849
Conrad	p 202, 1843?	Dominikowska	p 258, 1849	Engel	1823-58	Freitag	p 202, 1843?
Coradannar	1835	Dominkowski	1832	Engel	1833	Freiwald	p 258, 1849
Cubiska	1835	Domke	1835	Englehardt	p 326, 1855	Frerke	1832
Cybarska	1835	Domke	p 326, 1855	Erbsaur	p 326, 1855	Freudenheimer	p 258, 1849
Czarnojan	1823-58	Dommin	1823-58	Erdmann	1832	Freudenhammer	1823-58
Czelinski	1835	Donatz	p 258, 1849	Erfurth	1835	Freudenhammer	Pg, 35-1843
Czemska	1834	Donnerstag	1835	Ernisch	p 258, 1849	Freundt	p 326, 1855
Czemski	1834	Dorau	1823-58	Eschman	p 326, 1855	Freyer	1832
Czerwinski	1835	Dorau	1835	Eschner	1833	Freyer	Pg, 35-1838
Czerwinski	p 202, 1843?	Doring	p 326, 1855	Eschner	p 202, 1843?	Friede	1823-58
Czibicki	1832	Dorn	p 202, 1843?	Eschweiler	p 202, 1843?	Friede	Pg, 35-1843
Daam	1823-58	Dornken	p 258, 1849	Ettling	1835	Friede	p 202, 1843?
Dahm	1835	Dornken	p 258, 1849	Ewald	p 202, 1843?	Friedland	p 326, 1855
Dahm	p 258, 1849	Dragauss	p 326, 1855	Ewald	p 326, 1855	Friednica	p 326, 1855
Dalski	p 202, 1843?	Draing	p 202, 1843?	Ewaldt	1835	Friedrich	1823-58
Damerath	p 258, 1849	Drawenz	p 202, 1843?	Ewert	1823-58	Frieditag	1835
Dammran	1835	Dredzner	1835	Ewert	1833	Fritsch	1832
Dammrath	1832	Drescher	1835	Ewert	1834	Fritz	1823-58
Damran	p 258, 1849	Drews	1834	Ewert	p 326, 1855	Fritz	1823-58
Damrath	p 258, 1849	Drews	p 202, 1843?	F(o)erster	1823-58	Fritz	1832
Damrath	p 326, 1855	Drews	p 326, 1855	Fahldick	1823-58	Fritz	p 202, 1843?
Dancplewicz	Pg, 35-1834	Dreyer	1823-58	Fahldick	p 202, 1843?	Froeschel	1835
Danielowski	p 202, 1843?	Dreyer	1832	Faldiok	1832	Fromrel	p 202, 1843?
Daniereau	p 258, 1849	Dublinski	p 258, 1849	Falkenthal	p 202, 1843?	Fuchs	1823-58
Dannapfel	p 326, 1855	Duebbe	1835	Fall	1835	Fuhrmann	1823-58
Darmes	p 258, 1849	Dulni	1835	Fandrei	p 202, 1843?	Fuhrmann	p 326, 1855
Dass	p 326, 1855	Dulska	1823-58	Fang	p 326, 1855	Fuldick	p 326, 1855
Daudt	1823-58	Dulski	p 326, 1855	Feetz	1835	Fulkowsky	1834
Dauter	p 258, 1849	Durau	1823-58	Feld	p 258, 1849	Funk	p 326, 1855
David	1835	Dziarrha	p 202, 1843?	Felski	1835	Ga(e)cki	p 258, 1849
Dawdt	1823-58	Dziarrhi	p 202, 1843?	Fens	p 258, 1849	Gabriel	p 202, 1843?
de, Camp	p 202, 1843?	Dziarska, (1)	p 258, 1849	Fenske	1834	Gabriel	p 326, 1855
Debowski	1835	Ebel	p 326, 1855	Fenske	p 202, 1843?	Gabski	1835
Deck	p 326, 1855	Ebert	1835	Ferenger	p 326, 1855	Gade	1823-58

Gade	p 326, 1855	Goettmann	1823-58	Gudapp	1823-58	Heltner	1835
Gadgcke	1823-58	Goettmann	1835	Gudapp	1835	Hen	1832
Gadischke	1832	Goetz	p 326, 1855	Gudapp	p 202, 1843?	Henschke	p 258, 1849
Gadischnke	1823-58	Gohnski	p 258, 1849	Gudohr	1823-58	Hensel	1833
Gaede	p 202, 1843?	Goinzer	p 326, 1855	Gueldenap	p 258, 1849	Hensel	1835
Galant	1823-58	Gommer	p 326, 1855	Guenther	p 202, 1843?	Hensel	p 326, 1855
Gallub	1835	Gomoll	p 202, 1843?	Guergens	p 326, 1855	Herbst	p 326, 1855
Gamoll	p 202, 1843?	Gømøll	p 326, 1855	Gummand	p 326, 1855	Hermaer	1835
Garth	p 326, 1855	Goors	1823-58	Gumprecht	p 258, 1849	Hermann	1835
Gatz	1835	Gootmann	1823-58	Gunther	1833	Hermann	p 326, 1855
Gatz	p 202, 1843?	Gopke	p 326, 1855	Gurgens	1823-58	Herz	1835
Gatzke	1823-58	Gorbahn	1823-58	Gurgens	1833	Herzberg	p 258, 1849
Gatzke	1823-58	Gorbahn	1832	Guth	p 326, 1855	Heubner	1823-58
Gebelen	p 258, 1849	Goreski	p 326, 1855	Gutzmer	1835	Heydrich	p 326, 1855
Gebler	1823-58	Gorsch	p 258, 1849	Haack	1823-58	Heyer	1823-58
Gebler	1823-58	Gorsch	p 326, 1855	Haack	p 326, 1855	Heyer	1832
Gebler	p 202, 1843?	Goetzelle	p 258, 1849	Haak	1835	Hildebrandt	1823-58
Gegner	p 326, 1855	Gosda	p 326, 1855	Haber	p 202, 1843?	Hildebrandt	1832
Geister	p 202, 1843?	Gosse	p 326, 1855	Haberlandt	1832	Hildebrandt	1835
Gensel	p 202, 1843?	Gottlieb	1835	Habermann	p 258, 1849	Hildebrandt	p 326, 1855
Genuske	p 258, 1849	Gotzke	1823-58	Habermann	p 326, 1855	Hinkeliuann	p 202, 1843?
Gerbinski	1835	Grabowski	1832	Haelke	1823-58	Hinkleman	p 326, 1855
Gergs	p 326, 1855	Grabowski	p 258, 1849	Haelki	1823-58	Hintz	1835
Gerke	1835	Graeber	1823-58	Hager	p 326, 1855	Hinz	p 202, 1843?
Gerlach	1832	Graeber	p 326, 1855	Hallstein	1823-58	Hinzke	p 258, 1849
Gerlach	p 258, 1849	Graef	1823-58	Hallstein	p 202, 1843?	Hirschmann	p 258, 1849
Gerlich	p 326, 1855	Graeske	1835	Hand	1823-58	Hirthe	p 326, 1855
Gerwein	1832	Graetke	1823-58	Hand	p 258, 1849	Hoch	p 326, 1855
Gerwinske	1833	Graf	1823-58	Handt	Pg. 35-1843	Hoehnke	1835
Gerwinske	1835	Graff	1835	Handt	p 326, 1855	Hoest	1823-58
Geuenke	p 258, 1849	Grafullsin	1834	Hanke	1835	Hoffmann	1823-58
Gibbe	1823-58	Grahn	p 258, 1849	Hannsdorf	p 202, 1843?	Hoffmann	1835
Gielke	1832	Graiske	p 326, 1855	Hapke	1835	Hoffmeister	1834
Giese	p 258, 1849	Grammenz	p 258, 1849	Hardt	1823-58	Hoffschulz	p 326, 1855
Giese	p 326, 1855	Grandt	1835	Hartmann	1835	Hofmann	p 258, 1849
Gillert	1823-58	Gras	p 202, 1843?	Hartwig	p 202, 1843?	Hohmke	p 326, 1855
Gipke	p 326, 1855	Graske	1835	Hartwig	1835	Hohnel	p 326, 1855
Glaeckner	p 258, 1849	Greger	1833	Hastmann	p 258, 1849	Höller	p 326, 1855
Glaier	p 202, 1843?	Gregner	p 202, 1843?	Hastmann	p 326, 1855	Hollstein	1834
Glaser	1823-58	Gregor	1823-58	Heckmann	p 326, 1855	Hollzgriff	p 202, 1843?
Glaser	1832	Grell	1823-58	Hehlke	p 326, 1855	Holtke	p 258, 1849
Glaser	p 326, 1855	Grell	p 202, 1843?	Heidebruck	p 258, 1849	Holz	1823-58
Glashagen	p 326, 1855	Grenan	p 326, 1855	Heideck	1833	Holznapel	p 202, 1843?
Glauleitz	p 202, 1843?	Greozke	p 258, 1849	Heidemann	1833	Hoppe	1835
Glienke	p 326, 1855	Gribbe	p 258, 1849	Heidenreich	1823-58	Hoppe	p 326, 1855
Gliewenhagen	p 202, 1843?	Grieger	p 258, 1849	Heider	1823-58	Horn	1823-58
Gliuke	p 326, 1855	Grievenhagen	p 258, 1849	Heien	p 258, 1849	Horst	1823-58
Gloeckner	1823-58	Groening	1834	Heier	1835	Horst	1835
Gniefkowski	p 326, 1855	Groening	p 202, 1843?	Heinborn	1832	Horts	Pg. 35-1842
Gniewkowski	p 258, 1849	Gronau	p 258, 1849	Heinborn	p 326, 1855	Hørtz	p 326, 1855
Gobbe	1823-58	Grønau	p 326, 1855	Heinke	1835	Hoth	1832
Gobert	p 326, 1855	Gronig	p 202, 1843?	Heinkelmann	1835	Hotut	1823-58
Goebler	p 258, 1849	Gross	1823-58	Heinrich	1823-58	Hotuth	p 202, 1843?
Goede	p 326, 1855	Grossmann	p 202, 1843?	Heinrichs	1834	Hubbert	p 202, 1843?
Goerke	1823-58	Grossmann	p 258, 1849	Heinrichs	p 202, 1843?	Hube, Predehl	1834
Goerke	1823-58	Grube	1835	Heise	p 326, 1855	H_ubsohmann	p 258, 1849
Goerke	1833	Grun	1823-58	Heldt	1823-58	Huebothmann	1835
Goerlitz	1823-58	Grunau	1823-58	Heldt	1835	Hulzke	1835
Goersch	p 202, 1843?	Grunenberg	p 202, 1843?	Heldt	p 326, 1855	Hummel	1823-58
Goertz	1823-58	Grunfeld	p 326, 1855	Helf	p 202, 1843?	Hummel	1833
Goertz	1823-58	Grunke	1835	Hellwig	1823-58	Hunddorf	1835
Goertz	1832	Grunke	p 326, 1855	Hellwig	1834	Hunsdorf	1823-58
Goetmann	1823-58	Grzeske	1823-58	Hellwig	p 258, 1849	Hunsdorfer	1832

Huntendorfer	1823-58	Kallinowski	Pg. 35-1843	Kleinfeld	p 202, 1843?	Krampitz	1833
Huse	1823-58	Kankel	1835	Kleinfeldt	1832	Kranet	p 258, 1849
Huss	1823-58	Kannatowski	p 202, 1843?	Kleinkowski	p 326, 1855	Krause	1823-58
Hutzke	p 326, 1855	Kapleina	p 258, 1849	Klemm	1835	Krause	1823-58
Hyser	p 326, 1855	Kappke	1823-58	Klemm	p 202, 1843?	Krause	1832
J(F)antz	1823-58	Kappner	p 326, 1855	Klesh	p 258, 1849	Krebel	p 326, 1855
Jablonski	p 202, 1843?	Kapteina	p 258, 1849	Kliener	p 326, 1855	Krebs	1833
Jacobowitz	1835	Karank	p 326, 1855	Kliese	1823-58	Krebs	p 326, 1855
Jaeckel	1823-58	Karizeanken	p 258, 1849	Kliese	Pg. 35-1843	Kremmin	1835
Jaecker	1823-58	Karminski	p 326, 1855	Kliewer	1823-58	Kreuz	p 202, 1843?
Jaeger	1823-58	Karnick	p 258, 1849	Kliewer	1833	Krichham	p 202, 1843?
Jaeger	1835	Karnik	1835	Kling	p 326, 1855	Krieger	1823-58
Jaegner	1823-58	Karniok	1832	Klinge	1823-58	Kries	1835
Jager	p 326, 1855	Karp	1832	Klinge	Pg. 35-1843	Kroelling	1833
Jagusch	p 258, 1849	Karpany	p 202, 1843?	Klinge	p 202, 1843?	Kroelling	p 258, 1849
Jahn	1823-58	Karzeiski	1823-58	Klink	p 258, 1849	Kroll	1823-58
Jahn	1832	Karsten	p 258, 1849	Klotz	p 202, 1843?	Kronkaløw	p 326, 1855
Jahnke	p 326, 1855	Karus	1823-58	Kluge	1832	Kronke	1835
Jaischewski	p 326, 1855	Karus	Pg. 35-1841	Kluthe	p 202, 1843?	Kronnpat	1835
Jalowska	p 258, 1849	Karwiese	p 258, 1849	Kluthmeyer	p 258, 1849	Kruger	1823-58
Jandath	1823-58	Karwiser	p 202, 1843?	Knaabe	1823-58	Kruger	1832
Janke	1823-58	Kasidke	p 326, 1855	Knaak	p 258, 1849	Kruger	p 326, 1855
Janke	1823-58	Kasielke	1823-58	Knabe	1835	Krupp	1834
Janke	p 202, 1843?	Kasielke	1832	Kneblewski	p 326, 1855	Kubielsky	1835
Janke	p 258, 1849	Kasielke	p 326, 1855	Kniatek	1835	Kubiski	1835
Jann	1823-58	Kaslewski	p 258, 1849	Kniatkowsky	1823-58	Kubzynska	1823-58
Jann	1823-58	Kaspari	p 202, 1843?	Knoetgkeulle	1833	Kuchenbecken	1835
Jann	1833	Kavaus	p 202, 1843?	Knoetzke	1823-58	Kuchenbecker	p 202, 1843?
Jannschowski	1835	Kawnoski	1823-58	Knoetzke	1835	Kudnick	p 258, 1849
Janowska	1835	Kazik	p 258, 1849	Knof	1835	Kuehn	1823-58
Jantz	1823-58	Keiler	1823-58	Knoof	p 258, 1849	Kuehnbaum	1823-58
Jantz	1833	Kerber	1823-58	Knoop	1832	Kuehnke	p 258, 1849
Jantzen	1834	Kerber	1835	Knoot	1823-58	Kuehntopp	p 258, 1849
Januschewski	p 202, 1843?	Kerber	p 258, 1849	Knop	p 326, 1855	Kuentopp	p 202, 1843?
Januszewski	1832	Kerpau	p 258, 1849	Knopf	1835	Kugler	p 326, 1855
Janz	p 202, 1843?	Kichel	p 326, 1855	Knopp	p 202, 1843?	Kuhlmann	1823-58
Jedeschke	p 258, 1849	Kienbaum	1823-58	Knoptgan	p 326, 1855	Kuhlmann	1834
Jemke	1823-58	Kienbaum	1832	Knuth	1823-58	Kuhm	1835
Jeschke	1823-58	Kienitz	p 258, 1849	Knuth	1832	Kuhn	1835
Jeschke	p 326, 1855	Kientop	p 326, 1855	Knuth	p 326, 1855	Kuhnbaum	1835
Jeuke	1823-58	Kieper	1823-58	Koblezer	p 326, 1855	Kuhnert	1823-58
Jogolewska	1823-58	Kieper	1835	Koenig	p 326, 1855	Kuhnert	1835
John	p 202, 1843?	Kieper	p 202, 1843?	Koepke	1835	Kuhntopp	1835
Jonas	p 258, 1849	Kiepert	1823-58	Koepin	p 258, 1849	Kulweitt	p 326, 1855
Jost	1832	Kiepert	p 258, 1849	Koerter	p 202, 1843?	Kummer	1823-58
Jungies	p 326, 1855	Kiezinski	p 258, 1849	Koettner	p 202, 1843?	Kummer	1832
Junk	p 326, 1855	Kimm	p 258, 1849	Kohn	1835	Kummer	1835
Ka\$ielke	1823-58	Kinberg	p 326, 1855	Kolm	1823-58	Kummer	p 258, 1849
Kadau	1823-58	Kirsch	p 326, 1855	Kolm	1832	Kunigen	p 258, 1849
Kadau	p 258, 1849	Kittmann	1823-58	Kolm	p 202, 1843?	Kunkel	p 202, 1843?
Kadaz	1835	Klann	1823-58	Kolm	p 326, 1855	Kunkowski	p 258, 1849
Kaempt	1832	Klann	p 202, 1843?	Konezio	p 326, 1855	Kuntz	p 258, 1849
Kafiellid	p 202, 1843?	Klatt	Pg. 35-1843	Konrad	1833	Kunz	1835
Kahlau	1823-58	Klatt	p 202, 1843?	Kopp	1835	Kunz	p 202, 1843?
Kahlau	1832	Klatt	p 326, 1855	Kopper	p 326, 1855	Kunz	p 326, 1855
Kahn	p 258, 1849	Klawieter	1823-58	Kordula	p 326, 1855	Kurtius	1832
Kahntop	Pg. 35-1837	Klawisch	p 202, 1843?	Korthals	p 326, 1855	Kurzahls	1833
Kahntop	1835	Klawitter	p 258, 1849	Kosack	p 258, 1849	Kurzynski	1835
Kajnøwska	p 326, 1855	Klawonn	1823-58	Koschanesk	1833	Kuss	1823-58
Kalau	1833	Klawonn	1832	Kosel	1823-58	Kusschner	p 202, 1843?
Kalbe	p 202, 1843?	Klawonn	p 202, 1843?	Kownatzke	p 202, 1843?	Kuth	p 202, 1843?
Kallies	1823-58	Klaworn	1823-58	Kraeling	1823-58	Kuthnik	p 326, 1855
Kallies	p 326, 1855	Klein	1823-58	Kramer	1835	Kwiatkowsky	1833

Kziozek	p 258, 1849	Lietke	1832	Mark	p 326, 1855	Moorkæmp	p 326, 1855
Labienska	p 202, 1843?	Lietkeyn	1823-58	Marker	1823-58	Moorkainp	p 258, 1849
Lablein	p 258, 1849	Lindner	1835	Markump	p 326, 1855	Morau	p 326, 1855
Labuhn	p 202, 1843?	Lindner	p 202, 1843?	Marohn	1823-58	Muchscheide	p 202, 1843?
Labunia	1834	Linner	1834	Marohn	1834	Muehlke	p 258, 1849
Labunia	1834	Lippko	p 202, 1843?	Marohn	p 202, 1843?	Mueller	1832
Labunski	1823-58	Lipske	p 202, 1843?	Marøhn	p 326, 1855	Muellor	1823-58
Laczewski	p 202, 1843?	Lipynski	1823-58	Marquardt	p 326, 1855	Muhsal	1823-58
Ladenthain	p 326, 1855	Lobuss	1834	Marsch	1835	Muller	1823-58
Laeschke	1834	Lochtner	1835	Marstein	p 258, 1849	Munchow	1832
Laetzke	1823-58	Loefelnacher	p 326, 1855	Marth	p 202, 1843?	Mund	p 326, 1855
Lalskowske	p 326, 1855	Loellis	p 202, 1843?	Martin	p 258, 1849	Mundt	1823-58
Lamps	p 258, 1849	Loerke	1823-58	Marx	p 258, 1849	Mundt	1823-58
Lan	p 258, 1849	Loerke	1835	Marztonowski	p 202, 1843?	Mundt	p 202, 1843?
Landon	1835	Loerke	p 326, 1855	Maschke	1835	Munster	1834
Lange	1823-58	Loesche	1835	Mehling	1823-58	Munster	p 326, 1855
Lange	Pg. 35-1843	Loeschmann	p 202, 1843?	Mehling	Pg. 35-1839	Muretcki	p 258, 1849
Lanhow	p 202, 1843?	Loesselmacher	1823-58	Mehrholz	p 258, 1849	Musahl	1823-58
Laninsteinzi	p 258, 1849	Loesselnauther	1835	Meier	1835	Mutzel	p 326, 1855
Lankau	1823-58	Loewke	1823-58	Meinker	p 202, 1843?	Mylke	1823-58
Lankau	1833	Løhlke	p 326, 1855	Meister	1823-58	Mylke	1835
Lanzendoerfor	p 202, 1843?	Lommer	p 258, 1849	Meister	1823-58	Nachtigall	1823-58
Laskowski	p 202, 1843?	Lubitz	1835	Meister	Pg. 35-1843	Nachtigall	1835
Laub	p 326, 1855	Luchermund	p 326, 1855	Meister	p 258, 1849	Nagel	1823-58
Lawrenz	1823-58	Lucks	1834	Meister	p 326, 1855	Nakel	1835
Lawrenz	1833	Lude	1835	Melchor	p 326, 1855	Nandrei	1835
Lawrenz	p 202, 1843?	Ludwig	1823-58	Melsan	1823-58	Nebrau	p 326, 1855
Lawrenz	p 258, 1849	Luikon	p 258, 1849	Menke	1823-58	Neehep	1823-58
Lawrenz	p 326, 1855	Lukowsky	1832	Menke	1823-58	Neelipp	p 202, 1843?
Lay	1835	Luoht	1834	Menke	1832	Nehleip	1833
Legna	1823-58	Lurtteg	1823-58	Menke	1834	Nehrke	p 258, 1849
Lehman	1835	Luthanhagen	1835	Menke	p 202, 1843?	Nelke	p 326, 1855
Lehmann	p 258, 1849	Luthowski	p 202, 1843?	Menke	p 326, 1855	Nerenberg	1823-58
Lehwark	1823-58	Luths	1832	Menkowski	p 326, 1855	Netz	1823-58
Leidel	p 326, 1855	Lux	1823-58	Menz	1835	Neubauer	1823-58
Leidenhohner	1823-58	Lux	p 258, 1849	Menzynski	1835	Neubauer	1835
Leidgieb	1823-58	Maczejewski	1834	Menzynski	p 202, 1843?	Neumann	1823-58
Leipold	1823-58	Maerker	1835	Merkel	p 326, 1855	Neumann	1832
Lemerau	p 202, 1843?	Maerker	p 326, 1855	Merkin	1835	Neumann	p 202, 1843?
Lemke	1835	Maertini	1835	Metz	p 326, 1855	Neumann	p 326, 1855
Lemrau	1823-58	Maezejewski	1823-58	Meyer	1823-58	Neuschaefer	1834
Lengebusch	p 202, 1843?	Mahlke	p 202, 1843?	Meyer	1833	Neuschaeffer	p 326, 1855
Lengle	p 258, 1849	Majewski	1823-58	Meyer	p 202, 1843?	Nicolaus	p 202, 1843?
Lengner	1835	Majewski	p 202, 1843?	Miehlike	1834	Niebisch	p 258, 1849
Lengner	p 258, 1849	Malerks	p 258, 1849	Mielke	p 258, 1849	Niedzalkowski	p 202, 1843?
Lens	1823-58	Maleteki	1835	Mielke	p 326, 1855	Niess	1823-58
Lenser	1832	Mallon	1823-58	Mieseke	1823-58	Nikkel	1823-58
Lenz	1823-58	Mallon	1833	Millark	p 326, 1855	Nittwer	p 258, 1849
Lenz	1835	Mallon	p 258, 1849	Miltz	1823-58	Nitz	p 258, 1849
Leohæux	p 258, 1849	Malløn	p 326, 1855	Milz	1835	Noelke	1823-58
Leovan	p 258, 1849	Mandrich	p 258, 1849	Milz	p 326, 1855	Noelke	1835
Lesse	1823-58	Manka(e)	1823-58	Minuth	p 202, 1843?	Noelke	p 202, 1843?
Lesse	1832	Manke	p 258, 1849	Misinger	1823-58	Nordt	1823-58
L'Estrade	p 202, 1843?	Mankowski	1823-58	Misskowski	1823-58	Nuernberg	1832
Leuthenhagen	1835	Manos	p 258, 1849	Modler	1823-58	ø	p 202, 1843?
Leyer	p 326, 1855	Manowski	p 258, 1849	Moeller	p 258, 1849	Obe	1823-58
Liebenau	1832	Manselewski	p 326, 1855	Moeske	p 258, 1849	Obe	1835
Liebenau	p 202, 1843?	Mantensel	p 326, 1855	Moiske	p 326, 1855	Obe	p 326, 1855
Liebmann	p 326, 1855	Manthei	1835	Moldenhauer	1835	Oberlandt	1823-58
Lieg	1835	Manthes	1835	Moldenhauer	p 258, 1849	Onasch	1823-58
Lieg	p 202, 1843?	Manthey	1823-58	Moll	p 202, 1843?	Opfergede	1833
Liehr	p 326, 1855	Marenski	1833	Mond	1834		
Lietke	1823-58	Marhølz	p 326, 1855	Mondau	p 258, 1849		

to be continued



GER
MIS
3.8

MARRIAGE RECORDS FROM POMERANIA

1877 Civil Records

Stettin, Pomerania (Szczecin, Poland) has been a significant trade and craft center since the 10th century. It was also a major port of emigration. Many individuals from Europe worked and married in Stettin. Marriage extracts from Civil Registration District I for the year 1877 [Family History Library film no. 1199895] are continued in this issue.

Index includes (1) date of marriage; (2) entry number; (3) name of groom with date and place of birth; (4) name of bride with date and place of birth. Marriage documents contain additional information including religion; occupations; places of residence; if widowed, separated, or divorced; names, occupations, and residence of the parents of the bride and groom; witnesses. Names of parents of the bride and groom have been included below only if the residence of the parents differs from the residence of the groom or bride.

12 May 1877:

No. 277 - Louis Heinrich Carl Meyer b. 13 Nov 1849 Benneckenstein Kr. Nordhausen [Prussian Saxony], son of Louise Meyer to Friederike Charlotte Christine Auguste nee Meier born 5 Jan 1845 Ibenhorst by Alt-Damm.

14 May 1877:

No. 278 - Ernst Friedrich Rudolf Kaeding born 16 March 1852 Brüssow to Minnie Marie Henriette Mathilde Schultz born 26 Mar 1857 Stettin.

No. 279 - Albert Carl Wilhelm Hasenjaeger born 3 August 1842 Stargard, Pommern, to Anna Marie Louise Treubrodt, born 2 Feb. 1852 Naulin Kr. Pyritz.

No. 280 - Ludwig Theodor Hartwig born 14 October 1850 Gross Gustkow Kr. Bütow to Catharina Kowalski born 25 Nov 1837 Malgow Kr. Krotoschin, daughter of Jacob Kowalski and Elisabeth Drobiszczak.

No. 281 - Carl Wilhelm Heinrich Schneider born 16 Mar 1853 Stettin to Mathilde Auguste Bertha Vanesse born 1 August 1854 Stettin, member of the French Reformed Church.

No. 282 - Franz August Friedrich Ernst born 23 January 1839 Colberg son of Bataillon Tambour Johann Christian Franz Ernst to Emilie Albertine Friederike Dahlke born 23 February 1848 Bublitz.

No. 283 - Johann Gustav Albert Cloxin born 9 July 1853 Cartzig Kr. Naugard, son of Friedrich Cloxin and Wilhelmine Pasewalk both of Jarchlin to Auguste Caroline Graff, born 16 Dec. 1852 Klein Stepenitz Kr. Cammin.

15 May 1877:

No. 284 - August Friedrich Heymann born 21 December 1850 Krojanke Kr. Flatow to Ernestine Wilhelmine Luise Weitenkampf born 27 September 1850 Carnitz Kr. Greifenberg in Pommern.

No. 285 - Carl August Ferdinand von Nassau born 27 January 1850 Schönwalde Kr. Ueckermünde to the now deceased Christoph Carl Otto von Nassau and wife Charlotte Auguste Marie nee Leidel of Pyritz to Marie Henriette von Pirch born 1 Feb. 1851 Barzlin Kr. Coeslin, daughter of *Rittergutsbesitzer* Leopold Eduard Ferdinand von Pirch of Pyritz and deceased Henriette geb. Gräfin Sparr.



MARRIAGE RECORDS

No. 286 - August Friedrich Otto Hoffmann born 31 March 1856 Stettin to Auguste Friedrike Wilhelmine Marquardt born 6 March 1852 Stettin.

No. 287 - Paul Richard Alexander Mäntzel born 2 December 1851 Stettin to Albertine Friederike Eigbrecht born 16 November 1851 Boblin Kr. Randow.

16 May 1877:

No. 288 - Gottlieb August Ziebarth born 6 January 1849 Büchen Kr. Gnesen, son of deceased Andreas Ziebarth and Dorothee Krüger of Weizenburg Kr. Gnesen to Anna Regine Werblow born 17 August 1848 Prilup Kr. Pyritz, daughter of David Werblow and Anna Sophie Runtze of Klemmen Kr. Pyritz.

17 May 1877:

No. 289 - August Alwin Fritsch born 21 November 1839 Schlawe to Helene Marie Erbmunde Lüderitz born 17 Dec. 1855 Stettin.

No. 290 - Johannes Herrmann Paul Duvinage born 14 Feb. 1850 Greifenhagen, residing in Berlin to Anna Louise Baudler born 22 May 1853 Stettin.

No. 291 - Carl Friedrich Paul born 15 Mar 1848 Johannisberg by Prilup Kr. Pyritz, son of Johann Paul and Charlotte Gordan of Seelow to Catharina Lederer born 12 June 1856 Neppendorf in Siebenbürgen.

No. 292 - Johann Gottlieb Buerger born 21 Jan. 1835 Kawicz bei Rawicz to widow Rindfleisch, Auguste Wilhelmine nee Brüsewitz born 25 Aug. 1834 Finkenwalde Kr. Randow daughter of Johanne Friederike Brüsewitz of Finkenwalde.

No. 293 - Heinrich Albert Christian Abshagen, born 8 August 1849 Cransdorf Kr. Rügen to Emma Louise Wilhelmine Wichtel born 5 December 1848 Reselkow Kr. Coerlin, daughter of Reinhold Wichtel and Auguste Erdmann of Roman.

18 May 1877:

No. 294 - Hermann Johann August Wilm born 17 Apr 1852 Nerese by Colberg to Anna Wilhelmine Bertha Koch born 13 Jan. 1855 Stettin daughter of deceased Carl Robert Koch and Emilie Luise Prätz of Stargard, Pommern,

No. 295 - Friedrich Wilhelm Klein born 26 Feb. 1855 Popowken Kr. Gerdaun, son of Carl Klein and Louise Wermuth of Blendowen to Gustava Henriette Charlotte Wahl born 25 October 185 Fuhlendorf Kr. Franzburg, daughter of Johann Friedrich Ludwig Wahl and wife Caroline Henriette Sophie Utesch of Zussow.

No. 296 - Friedrich Wilhel Labbow born 29 May 1843 Retzowsfelde Kr. Greifenhagen to Caroline Ernestine Auguste Steinweg born 24 March 1853 Züllchow Kr. Randow, daughter of Carl Michael Friedrich Wilhelm Steinweg and wife Wilhelmine Christine Albertine Löhn of Stettin.

No. 297 - Franz Albert Mausolf born 29 March 1851 Steinborn Kr. Schlochau to Maria Bertha Priebe born 16 Apr 1850 Gissolk by Baerwalde daughter of Martine Friedrich Wilhelm Priebe and Hanna Friederike Emilie Krüger of Zippnow.

No. 298 - August Ferdinand Kraemer born 15 May 1856 Lenz Kr. Saatzig son of Gottlieb Kraemer and Wihelmine Stemmler of Massow to Ida Josephine Eichert born 16 July 1855 Stettin.

No. 299 - Christian Friedrich Wilhelm Schütt born 4 November 1854 Neuenkirchen Kr. Randow to Bertha Marie Elisabeth Ehlert born 12 May 1854 Poelitz daughter of Christian Friedrich Ehlert and Dorothea Regine Heidke of Stettin.

19 May 1877:

No. 300 - Franz Hermann Schulze born 2 Jun 1843 Wechselburg Kingdom of Sachsen to Emilie Auguste Friederike Moede born 26 October 1844 Gross Leistikow Kr. Naugard, residing Grabow a/Oder daughter of deceased Carl Friedrich August Moede and Wilhelmine Wilke of Stargard/Pommern.

No. 301 - Robert Edmund Theodor Berkenhagen born 7 April 1850 Stolzenhagen Kr. Randow to Albertine Wilhelmine Brüssow born 6 May 1838 Stettin.

No. 302 - Adalbert Luczak born 31 Mar 1850 Gozdowo Kr. Wreschen son of Stephan Luczak of Otczyn and deceased Agnes Krzyzaniak to Hanna Maria Friederike Laak born 12 May 1850 Retzenhagen Kr. Usedom-Wollin.

MARRIAGE RECORDS

22 May 1877:

No. 303 - John Ernest Pacher born 9 May 1842 Schaeferkamp by Hamburg, residing in Eimsbüttel to Caroline Auguste Bertha Ida Editha (Freifraulein) von Münchhausen born 27 July 1843 Gardelegen, residing in Schloss in Stettin, daughter of Carl Wilhelm August Ferdinand (Freiherrn) von Münchhausen.

No. 304 - Gottlieb Friedrich Hermann Sellin born 20 June 1850 Greifenberg/Pommern to Helene Marie Hermine Thime born 9 April 1851 Stettin.

No. 305 - Wilhelm Heinrich Eduard Wendt born 7 November 1837 Kaltenhagen im Fuerstenthumer Kreise to Caroline Auguste Mathilde Oehlmann born 24 August 1845 Stolp, residing in Bredow Kr. Randow.

No. 306 - Heinrich Adolph Reinhold Härling born 1 Dec 1845 Grünburg, Schlesien, residing in Siegersdorf Kr. Bunzlau to Marie Julie Mathilde Emma Louise Friederike Schreiber born 13 March 1844 Stettin.

No. 307 - Carl Friedrich Wilhelm Peters born 24 Jun 1856 Greifswald, residing in Stettin to Anna Therese Wilhelmine Lenz born 14 May 1853 Grabow/Oder.

No. 308 - Johann Wilhelm Carl Tegge born 18 August 1846 Crien Kr. Anclam to Auguste Emilie Charlotte Zochert born 5 September 1847 Lebus daughter of

deceased August Zochert and wife Anne Sophie Frölich of Cüstrin.

No. 309 - Johann Jacob Schreiber born 29 July 1850 Ostserwiek Kr. Konitz to Caroline Auguste Kietzmann born 27 July 1844 Grimnitz by Joachimsthal.

23 May 1877:

No. 310 - Johannes von Wienskowski born 22 July 1844 Bromberg to Johanne Marie Anna Schubert born 21 Sept 1857 Stettin.

No. 311 - Hermann Ludwig Wilhelm Rannow born 27 November 1833 Heinrichsfelde Kr. Regenwalde to Hulda Mathilde Riedel born 6 December 1848 Zimmermannshorst Kr. Naugard.

No. 312 - Carl Friedrich August Braun born 7 Septe 1840 Friedrichsthal bei Gartz a/Oder son of deceased August Friedrich Braun and wife Caroline Wilhelmine Schmidt of Buchholz to widow Friedrich, Bertha nee Küster born 12 November 1844 Gross Schönfeld Kr. Greifenhagen.

24 May 1877:

No. 313 - Carl Rudolf Leichsenring born 14 August 1830 Stettin to Laurette Adeline Henriette Wergien born 4 Sept 1838 Caseburg Kr. Usedom-Wollin daughter of deceased Joachim Wergien and Anna Marie Wilhelmine Wendt of Swinemünde. ♦

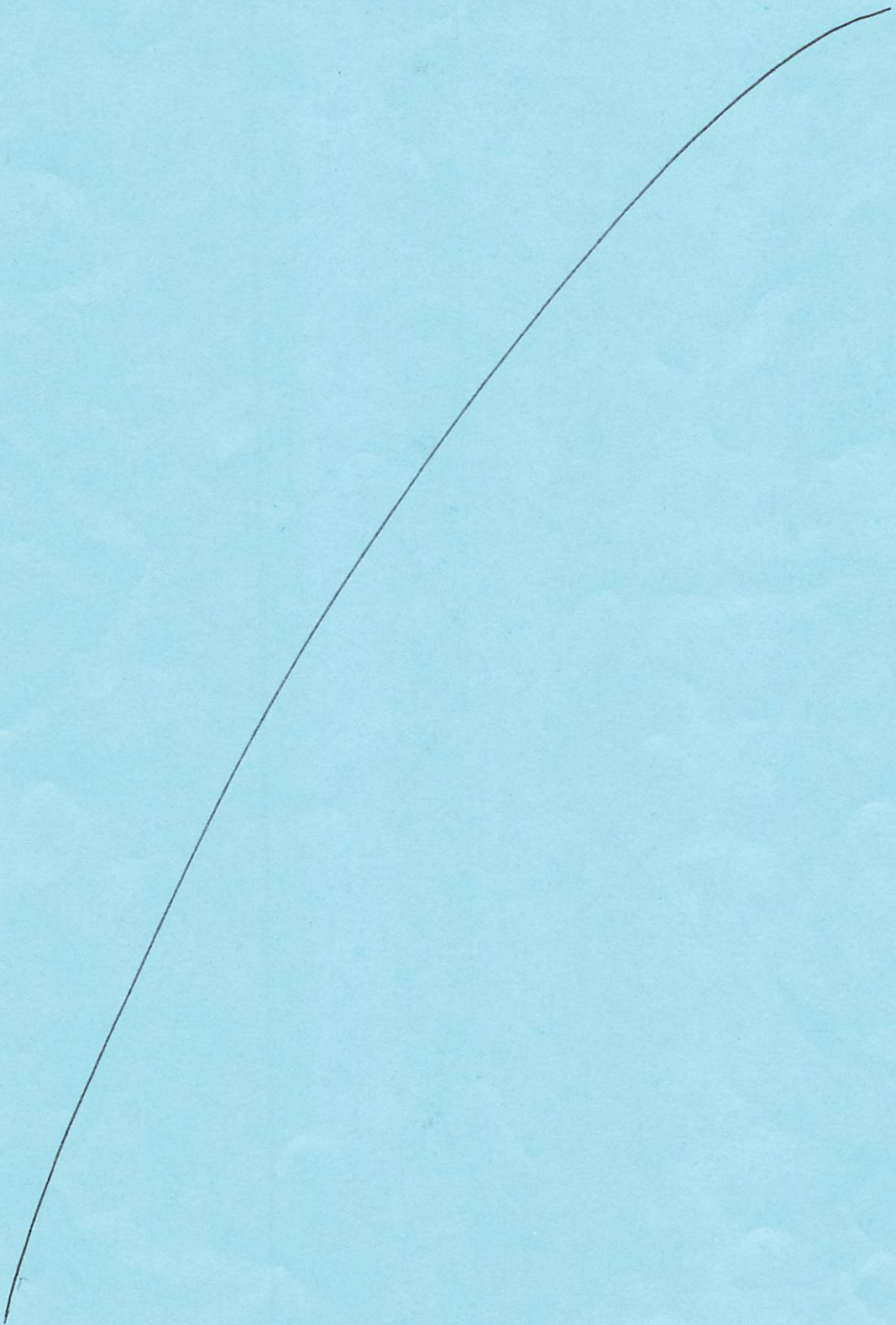
Book Reviews

Solingen: History of a City From Its Beginnings To the End of the 17th Century

Lewis Rohrbach, C.G., of Picton Press, wrote:

Solingen is one of Germany's older (founded 1170) and better known cities—known worldwide for its knives and other cutlery, swords, and fine steel. This is a translation of the town's history first published in 1969 in German as *Solingen: Geschichte einer Stadt: von den Anfängen bis zum Ausgang des 17. Jahrhunderts*, and translated here with the kind permission of the author's

sons....Extremely few German city and town histories have been translated into English. Here is an almost unique opportunity to read the comprehensive history of one of the great cities in a county which is the mother of such a large proportion of America's immigrants....Although not all are mentioned in this book, Bell, Dunkelberger, Gottschalck, Grahe, Hartkopf, Kirschbaum, Knepper, Lobach, Scharrenberg, Studebaker, and Weck are among the names found in the records of the area of Solingen.



GER
MISC
3.01

POMERANIANS

IN THE RECORDS OF BERLIN

Compiled by Laraine K. Ferguson

After the 30 Years' War, Frederick William the "Great" Hohenzollern "Elector" gained acquisition of many new territories, including the eastern half of Pomerania. Individuals from many areas would enter Berlin, many of them conscripts in the Prussian military forces. Others would come to learn a trade or develop the city's industries. Berlin's records reflect its various waves of immigrants. Names of individuals from Pomerania identified in the records of Berlin are enumerated in this preliminary list from church and cemetery records.

1769 January: Marriage proclamation in St. Georgen parish; George Silberschmidt of Berlin, son of Christian Silberschmidt of Stargard in Pomerania and Maria Dorothea Balde [FHL 070185].

April 13: Marriage in St. Georgen parish of Johann Gottfried Ludewig to Anna Hassen, daughter of Valentin Hassen of Baumgarten by Dramburg in the Neumark [FHL 070185].

1770 July 8: Marriage in St. Georgen parish of Gottlieb Ebener, widower to Maria Elisabeth Stentzel, daughter of deceased Johann Jacob Stentzel, shoemaker in Stettin [FHL 070185].

September 6: Marriage in St. Georgen parish of Gottfried Gaulke of Fiddichow, son of the deceased Jacob Gaulcke of Coeslin to Henrietta Maria Daun [FHL 070185].

Marriage proclamation in St. Georgen parish of Johann Andreas Brieger and Anna Dorothea Schmidt, married in Stettin [FHL 070185].

1771 July 4: Marriage in St. Georgen parish of Martin Weinhalt, son of Martin Weinhalt of Nadrense by Stettin and Sophia Dorothea Burgermeister, daughter of Johann Burgermeister of Neu-Strelitz Mecklenburg [FHL 070185].

1772 Marriage proclamation in St. Georgen parish of Samuel Schröder of Pyritz in Pomerania, son of Samuel Schröder of Berlin and Maria Dorothea Bredlo, daughter of Michael Bredlo of Pyritz, married in Pyritz [FHL 070185].

August 7: Marriage in St. Georgen parish of Samuel Ludwig Waldheim and Regina Dorothea Malmgrön, daughter of deceased Erich Malmgrön in Stralsund [FHL 070185].

November 17: Marriage in St. Georgen parish of Johann Friedrich Bischoff, son of Professor Bischoff of Stettin with Dorothea Juliana Naumann of Berlin [FHL 070185].

December 1: Marriage in St. Georgen parish of Carl George Burchardt, citizen of Berlin, son of deceased Christian Burchardt, citizen in Barcko in Pomerania with Mrs. Johanna Louysa Gutschkin [FHL 070185].

1773 April 12: Marriage in St. Georgen of Joachim Erdmann Hencke, son of deceased Joachim Erdmann Hencke, citizen in Dramburg in the Neumark with Charlotta Sophia Wilhelmine Heinrich [FHL 070185].

- 1776 April 8: Marriage in St. Georgen parish of Michael Friedrich Hartwig, son of George Hartwig, worker in Fiddicho[w] in Pomerania and Christina Charlotta Sophia Köhler of Ziegeler [FHL 070185].
- 1815 May 28: Marriage in St. Georgen parish; Johann Lichtel, age 39, (father of Elbing) to Wilhelmine Gottschu, age 21, daughter of the deceased Shoemaker in Stettin [FHL 070185].
- 1833 June 15: Death of Peter Sielaff, soldier from Beblin Kr. Schlawe in Pomerania, unmarried [FHL 070702].
- June 14: Death of Carl Kross, age 28, from Masow Kr. Saatzig, unmarried; survivors: parents, 3 brothers, 1 sister of Massow [FHL 070702].
- 1842 February 24: Death of Johann Griebenow born in Gruppenhagen Kr. Schlawe, age 23 [FHL 070703].
- March 11: Death of Johann Boede, born in Eichhoff Kr. Uckermünde R.B. Stettin, age 21 [FHL 070703].
- March 31: Death of Carl Gottlieb Christian Gutknecht, born in Sager Kr. Belgard, age 22 [FHL 070703].
- April 19: Death of Johann Gottlieb Stresow, born Groessin Kr. Schiefelbein, age 46 [FHL 070703].
- April 30: Death of Carl von Neander, born Labes in Pomerania, age 80 [FHL 070703].
- November 29: Death of Sophia Mattis, born in Stargard, wife of soldier Wilhelm Giese [FHL 070703].
- Death of Johann Dombrowsky from Stargardt, RB Marienwerder [FHL 070703 p. 38].
- 18 December: Death of Johann Michael Schiefelbein, born Virchow Kr. Dramburg, age 23 [FHL 070703].
- December 26: Death of Herrmann August Ferdinand Zernke, born Schwessow Kr. Greiffenberg, age 22; survivors: mother and 6 siblings [FHL 070703].
- December 18: Death of Heinrich Wilhelm Graf von Schlieffen, born Cöslin, age 86; buried in Invaliden Kirchhof [FHL 070703].
- 1843 January 8: Death of Johann Zülsdorf born Regenwalde RB Stettin, age 22 [FHL 070703].
- February 3: Death of Gottlieb Kamke from Varchminshagen, RB Cöslin, age 22 [FHL 070703].
- April 4: Death of George Kruse from Usedom RB Stettin age 23, survivors: parents in Usedom [FHL 070703].
- June 24: Death of Wilhelm von Herr, born in Stettin, age 70 [FHL 070703].
- July 14: Death of Caroline Friederike Hopfner, wife of Carl Friedrich Luther, born in Vengloshagen by Schiefelbein, age 37 [FHL 070703].
- December 1: Death of Christian Friedrich Porath, born in Stargardt, age 54, survived by wife and 4 children [FHL 070703].
- 1844 January 23: Death of Heinrich Nitsche, born in Stargard Kr. Saatzig RB Stettin, age 29, survived by wife and 1 daughter [FHL 070703].
- January 27: Death of Carl Friedrich Besch born in Stettin, age 42 [FHL 070703].
- February 27: Death of Johann Jahnke, born in Bernstorf by Bütow, age 68, survived by wife and one daughter [FHL 070703].
- June 8: Death of Johann Röske, born in Leba Kr. Lauenburg RB Cöslin, age 21 [FHL 070703].
- July 4: Death of Rudolph Bauermeister, born in Stralsund, age 23 [FHL 070703].

- November 20: Death of Carl Wilhelm Mattke, born Baumgarten Kr. Dramburg RB Cöslin, age 22, survived by mother and 2 brothers of Sarzanzig Kr. Dramburg [FHL 070703].
- 1845 January 29: Death of Carl Voll, born Lindow Kr. Schlawe RB Cöslin, age 22, survived by parents of Muddel Kr. Schlawe [FHL 070703].
- March 6: Death of Johann Wilhelm August Kasulke, born Schönwalde Kr. Regenwalde R.B. Stettin, age 25 [FHL 070703].
- May 8: Death of Carl Friedrich Pauli, born in Stargard, age 67 [FHL 070703].
- July 7: Death of Sophia Wilhelmine Gescher, wife of Daniel Stips, born in Pyritz, age 48 [FHL 070703].
- August 29: Death of Friedrich Wilhelm August Hintze, born in Dramburg RB Cöslin, age 31, survivor: son [FHL 070703].
- September 7: Death of Christoph Herrmann Westphal, born in Varchmin Reg. Cöslin [FHL 070703].
- September 16: Death of August Ferdinand Starke, born in Eventhin Kr. Schlawe, age 22, parents of Schoenebeck Kr. Saatzig [FHL 070703].
- November 9: Death of Carl Friedrich Theodor Jacobs, born in Treptow a/T. Kr. Demmin RB Stettin, age 26 [FHL 070703].
- December 14: Death of Wilhelm Rademacher, born Stralsund, age 20 [FHL 070703].
- December 20: Death of George Jacob Baron von Diezelski, born in Geusen by Lauenburg in Pomerania, Major, age 75; buried in officers cemetery [FHL 070703].
- December 29: Death of General Major Friedrich von Vogel, born in Cosel, age 70 [FHL 070703].
- 1849 December 29: Death of Ottomar Louis Mathias, age 33, born Oberförsterei, between Stettin and Gollnow, unmarried. [FHL 070703 p. 284].
- September 25: Death of Carl Linde born Plontzig Kr. Pyritz, unmarried. [FHL 070703].
- September 17: Death of Johann Bartrow from Augustwalde Kr. Naugard, age 23. [FHL 070703].
- September 11: Death of Johann Granholm from Willerswalde Kr. Grimmin RB Stralsund, age 24. [FHL 070703].
- September 9: Death of Friedrich Bogenschneider born Lenz Kr. Saatzig RB Stettin, age 20, survivors: parents in Lenz. [FHL 070703].
- September 1: Friedrich Wilhelm Albert Schönberg born Stettin, age 23, unmarried. [FHL 070703].
- August 27: Death of Friedrich Kroll born Trebbin Kr. Rummelsburg, age 25. [FHL 070703].
- August 17: Death of Wilhelm Meyer born Krien Kr. Anclam, age 22. [FHL 070703].
- August 13: Death of Wilhelmine Amalie Auguste Löper born Stargard, wife of Wilhelm Eduard Ernst Zielke, age 30, three minor children. [FHL 070703].
- August 10: Death of Albert Otto Eberhard Schmidt from Stargard, age 35, survived by wife and 2 minor children. [FHL 070703].
- August 10: Death of Ludwig Weege of Jacobshagen Kr. Saatzig, age 23. [FHL 070703].



